

2000 8m Pelin Vendetta

Price: \$59,000



Pelin Vendetta with extraordinary attention to detail which has resulted in a great-looking cruiser. Diesel cruisers of this standard, on a good road legal trailer simply don't come up at this price very often. 26ft/8m with fold down and removable Hard top. Very economical 4.2L Toyota turbo diesel - 380Hrs Diesel - 17LPH, Cruise 24 knots Top speed 32 knots Reg & WOF Trailer, Tows very easily approx 2.5 t, Electric disc brakes + Disc parking brakes. The Vendor will remove cab control kit from current tow vehicle. New owner to install in their own vehicle. Good overnighiter with toilet, shower, and Galley. Current owners use for everything from a quick day outing, to fishing in the Cook Straight with the ability to be able to launch anywhere. Our Vendor will consider trading their Vendetta plus cash for a launch up to 12m. Total combined trade and cash value limit of \$100,000. Call/txt/email Vendor's broker – Ian Duncan 021 121 9524 ian@parkermarinegroup.co.nz

Description

Length LOA: 8.0m

Beam: 2.5m

Draft: 1.0m with Leg Down

Berths total: 2

Designer: Frank Pelin

Builder: Unknown - Professional standard

Launched: 2000

Engine: Single 4.2L (200hp) Toyota turbo diesel - 380Hrs

Cooling: Heat exchanger

Fuel type: Diesel

Fuel capacity: 200+L

Cruising speed: 22-25 knots

Max speed: 32 knots

Range: Est 200Nm

Transmission: Volvo Penta sternleg with Duoprop

Hull material: GRP

Construction: Composite, glassed inside and out

Electrical: Separate house and start batteries, Shore power connection (Has never been used & not EWOFF).

Remote control spotlight, Trim tabs.

Entertainment: Stereo

Water capacity: 80 litres

Water System: Pressure cold water only - Galley and Shower

Accommodation: 2 berths

Head: 1 x Head, Grey & Black water holding tanks

Shower: 1

Galley: 1

Communications: VHF

Navigation and Electronics: Raymarine chartplotter/Fish finder, SeaRanger Computer

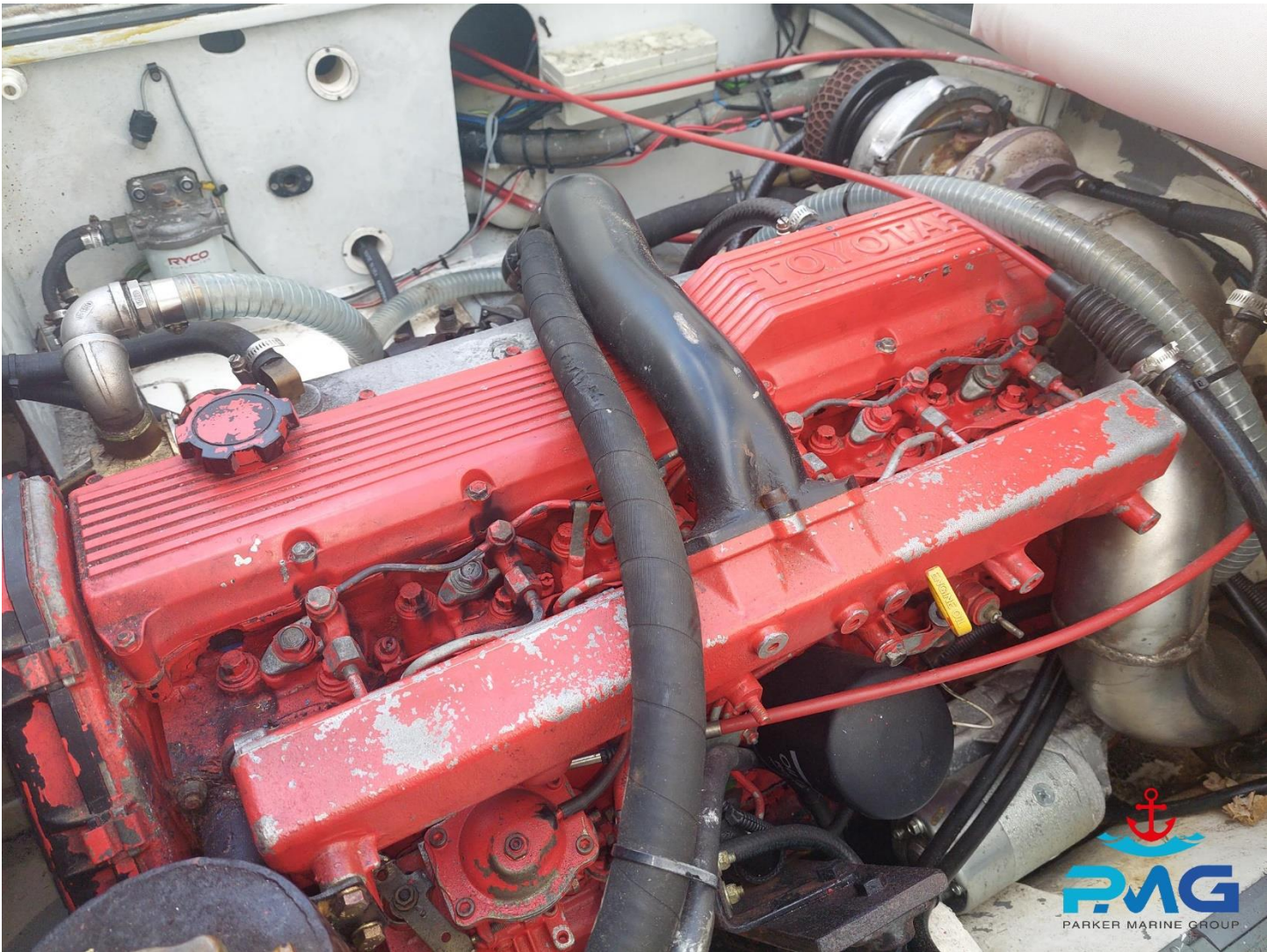
Ground Tackle: Estimated 75-100m warp with 7-10m chain

Anchor winch or capstan: Auto windlass

Safety Equipment: EPIRB, Fire extinguisher

Extras: Two burner portable gas cooker, Outboard auxiliary bracket on duck board







For more information, or to schedule a viewing of this vessel, please contact Ian Duncan.

Phone: 021 121 9524

Email: ian@parkermarinegroup.co.nz

IMPORTANT: The Company offers the details of all vessels in good faith but cannot guarantee or warrant the accuracy of this information, nor warrant the condition of the vessel. A buyer should instruct their agents, or their surveyors, to investigate such details as they desire validated. Vessels are offered subject to prior sale, price change, or withdrawal without notice.